



# Lickey Hills Primary School and Nursery Special Educational Needs and/or Disabilities Information for parents 2022/2023

September 2022

At LHPSN we strive to provide the best possible education for all of our pupils regardless of differences.

## **The LHPSN Special Educational Needs Team**

**Special Educational Needs and Disability Coordinator (SENDCo) H. Williams**

**Head Teacher:** Miss A. Salisbury National SENDCo award course April 2018

**Early Years SENDCo** - J. Reading

**School Educational Psychologist** - Dr D. Rouse

**School Nurse** - Caroline Nichols

Our school's SENDCo has overall responsibility for monitoring provision for pupils within the school. Each term there is the opportunity for parents of children on the Special Educational Needs register to come in and discuss progress and any concerns they may have, with the class teacher. The school SEND team also run other events and training throughout the year - Look out for future dates on the school website. The first port of call for your child is your child's class teacher. These are the key workers and have the overall responsibility for your child at LHPSN.

## **Question: How is the decision made about what type and how much support my child will receive?**

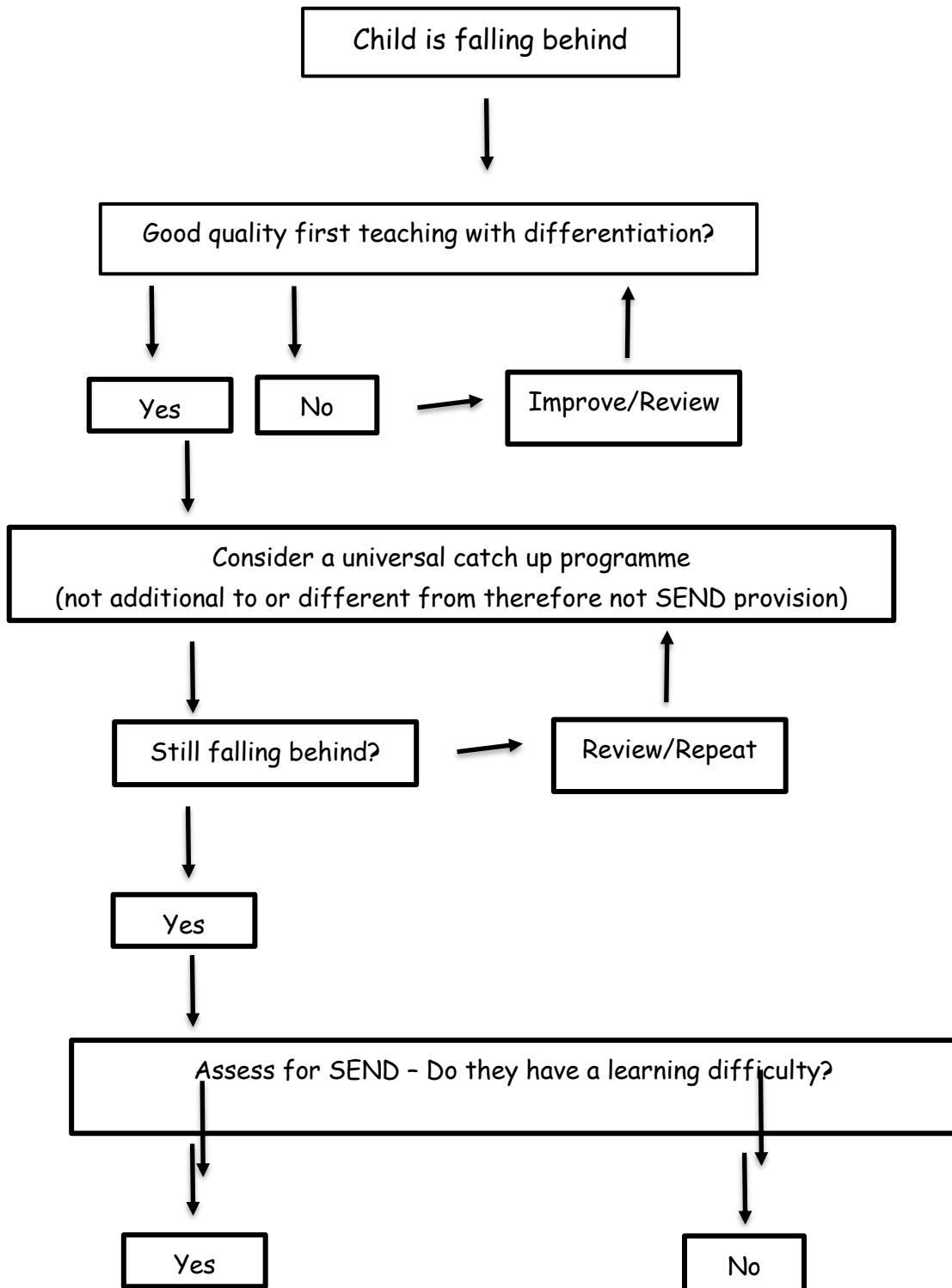
For those children identified with additional needs there is a graduated approach for support, in most instances through focused targets and in class support, children manage to progress well. In the first instance the class teacher will fill out a SEND identification sheet for the SEND team asking for further advice. A member of the SEND team may then complete observations and offer 'in class support' before discussion with parents. If, in consultation with the class teacher, it is felt that the inclusion on the SEND register is needed then parents will be called in to discuss next steps and to give permission. At this point we may also decide to involve external agencies to offer further strategies and support. This may be from a range of agencies such as Speech and language support, Educational Psychologist, Occupational Therapy, the Positive Behaviour Team, Early Help etc.

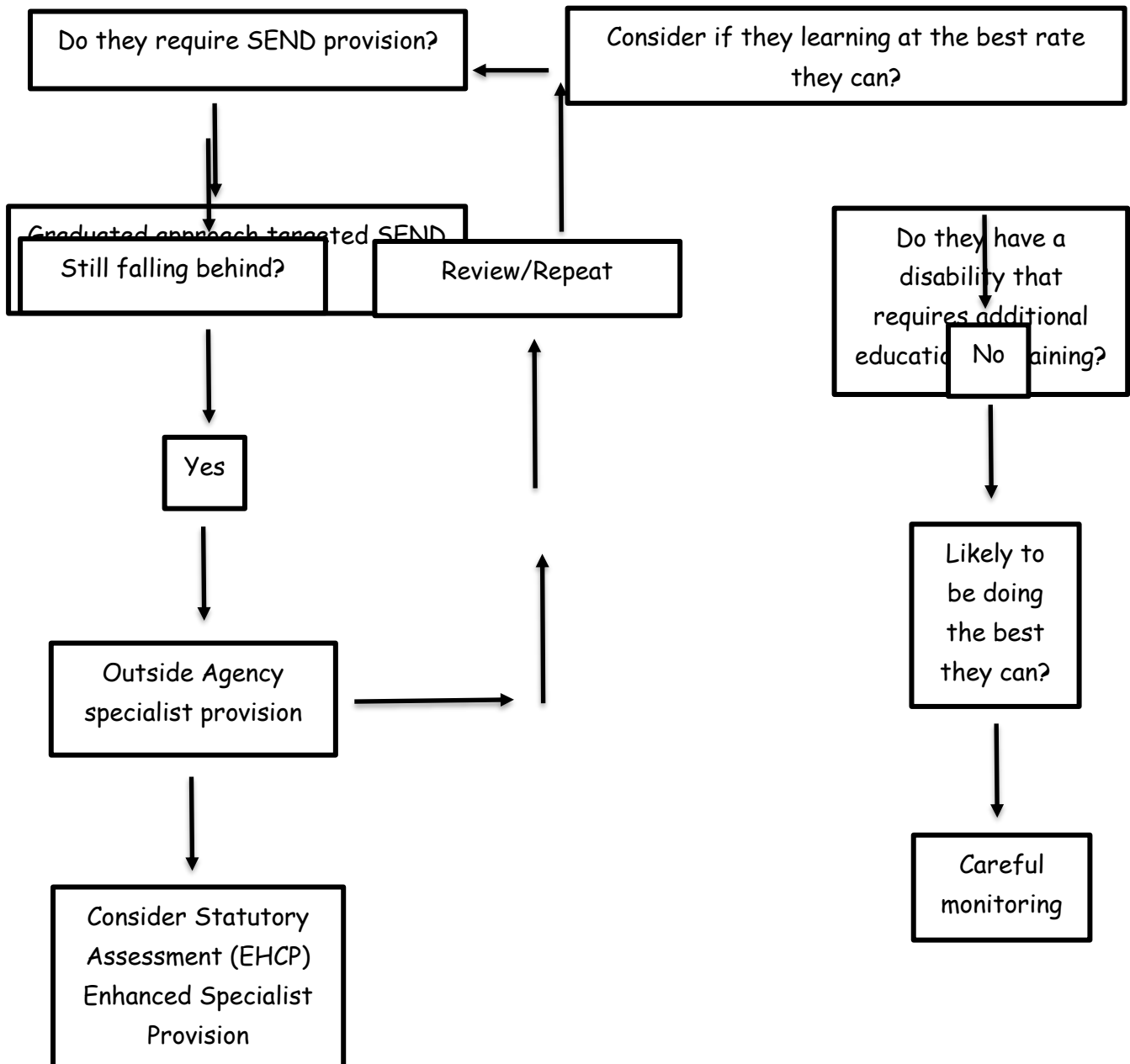
In exceptional circumstances and after a great deal of support and strategies have been tried and despite this, no progress has been made, it might be decided that it is appropriate to apply for an Education and Health Care

Plan. This is a legal document which outlines targets, provision and support.

As part of the process a range of professionals are consulted and they complete assessments and reports. Those children with an Education and Health Care Plan (EHCP) will have a review held annually to look at targets and future support. Children with an EHCP may be eligible for some additional funding to support their education, this may be used in a number of ways for example: to provide intervention, specialist equipment or access to additional provision. At LHPSN all of our children receive a bespoke package of support based upon their individual needs. The children will work with a range of adults throughout the week on a 1:1 and small group basis.

### Decision Chart





**Question: How does LHPSN identify children who need additional support?**

Children with additional needs are identified by class teachers in liaison with the School's SENDCo. Children are monitored by staff through the school with personalised targets which are also sent home to parents on their Individual Provision Map (IPM). Children may also have their child friendly targets on tables in the classroom so that they are visible throughout the day.

**SEND registers At LHPSN**

We look at placing children on three levels of SEND:

Pupils with statutory assessments (EHCP)

Pupils accessing additional external support or significant school support (GR2 - SEND Support)

Pupils who are being supported with support provided by the school (GR1 - Targeted Support)

## Timetables

The SENDCo, along with the school Senior Leadership team (SLT), set an intervention timetable for Children who are on the SEND list and who need additional support and intervention. These interventions are monitored and evaluated by the class teacher and teaching assistant.

### **Question: How will staff support my child with additional needs?**

Our Nurture Team also offer specialist groups throughout the day, these change on a termly basis depending on need. Some children are in receipt of top up funding, this is used by the school in a number of different ways including for additional resources, support in class or for external support. Children may also access the Nurture Team for specialist intervention.

### **Question: What specialist services and expertise are available at Lickey Hills Primary School?**

Miss Salisbury, our school Head Teacher, has undertaken the National SENDCo Award course at Worcester University. We have a range of highly experienced teachers and TA's who offer a wealth of advice and experience. In liaison with parents, assessments are carried out with pupils, a report written and support strategies are suggested for both home and school. In addition to this, if school feels that it would be beneficial for your child we can access support and advice from external agencies for:

- Speech and language
- Mental health
- ASD
- Hearing support
- Visual support
- Occupational therapy
- Behaviour support
- Paediatrician
- Parent support
- Assistive technology (ICT)

It is important to remember that although referrals are completed, all agencies have a waiting list and will not guarantee being able to see your child within the academic year. In addition to the above, we can also access agencies which we need to pay for, each year school allocate an amount for external support such as Educational Psychologists. As with all agencies, these too have a waiting list and school will allocate priorities according to levels of need. If you have any concerns about your child please see your child's class teacher after school, or make an appointment through the school office. Any concerns that cannot be dealt with by the class teacher will be passed on to the school's SEND team. Our SEND section of the school website has a range of information about further support and contacts.

**Question: How will I know how my child is doing and how I can support their learning at home?**

Our website has many helpful ideas for helping your child at home in a range of subjects. Each term staff will go through your child's targets with them in class, they will then set new targets for the following term. Staff will send home copies of some targets that you can work on at home along with suggestions of ways you can help. They will also meet with you to discuss these targets. Our school website also provides many examples of how you can support your child at home with their learning.

**Question: My child is new, how will LHPSN make the transition better?**

Children joining the school have a range of visits to ensure that they are prepared for transition to Primary school. Teachers and the SEND team visit preschools to talk to previous caregivers about any additional needs and support with strategies to make the transition as smooth as possible. Our older pupils begin to prepare for transition to Secondary school when they are in Year Five. We discuss Secondary options and make visits to different settings in order for pupils and parents to make an informed decision about which provision will suit them best. Pupils with additional needs will receive additional visits to secondary settings in Year Six in order to feel more prepared for transition.

At Lickey Hills Primary School we take pride in the provision provided to every one of our pupils in order for all to reach their full potential no matter their specific needs.

H. Williams

September 2022